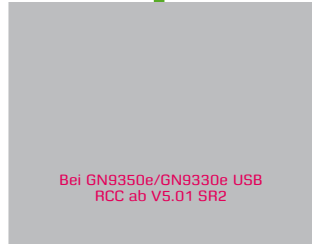
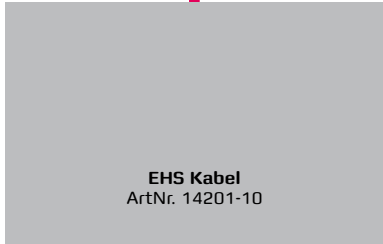


1
Vorhandenes
Telefon



2
Adapter/Verstärker
u. EHS/RCC
Voraussetzungen



3
Artikelnummer
Abb. siehe unten

- GN9350e, NC
ArtNr. 9356-607-401
- GN9330e, NC
ArtNr. 9337-508-401
- GN9120, NF, EHS
(Kabel inkl.)
ArtNr. 9120-48-11
- GN9120, Omni, EHS
(Kabel inkl.)
ArtNr. 9120-30-11
- GN9120, NC, EHS
(Kabel inkl.)
ArtNr. 9120-28-11
- GN9120, NC, Duo, EHS
(Kabel inkl.)
ArtNr. 9129-808-111
- PRO 9470, NB
ArtNr. 9470-26-904-101
- PRO 9460, NC
 Mono: ArtNr. 9460-25-707-101
 Duo: ArtNr. 9460-29-707-101
- GO 6470, NB
ArtNr. 6470-15-207-501

- GN9350e, NC
ArtNr. 9356-607-401
 - GN9330e, NC
ArtNr. 9337-508-401
 - GN9120, NF, EHS
ArtNr. 9120-48-11
 - GN9120, Omni, EHS
ArtNr. 9120-30-11
 - GN9120, NC, EHS
ArtNr. 9120-28-11
 - GN9120, NC, Duo, EHS
ArtNr. 9129-808-111
 - PRO 9470, NB
ArtNr. 9470-26-904-101
 - PRO 9460, NC
 Mono: ArtNr. 9460-25-707-101
 Duo: ArtNr. 9460-29-707-101
 - GO 6470, NB
ArtNr. 6470-15-207-501
- *GN9120, EHS im Standardmodus

- GN9350e, NC
ArtNr. 9356-607-401
- GN9330e USB, NC
ArtNr. 9337-508-401
- PRO 9470, NB
ArtNr. 9470-26-904-101
- PRO 9460, NC
 Mono: ArtNr. 9460-25-707-101
 Duo: ArtNr. 9460-29-707-101
- GO 6470, NB
ArtNr. 6470-15-207-501
- GO 6430, NB
ArtNr. 6430-17-20-201



L M N
PRO 9400 Serie



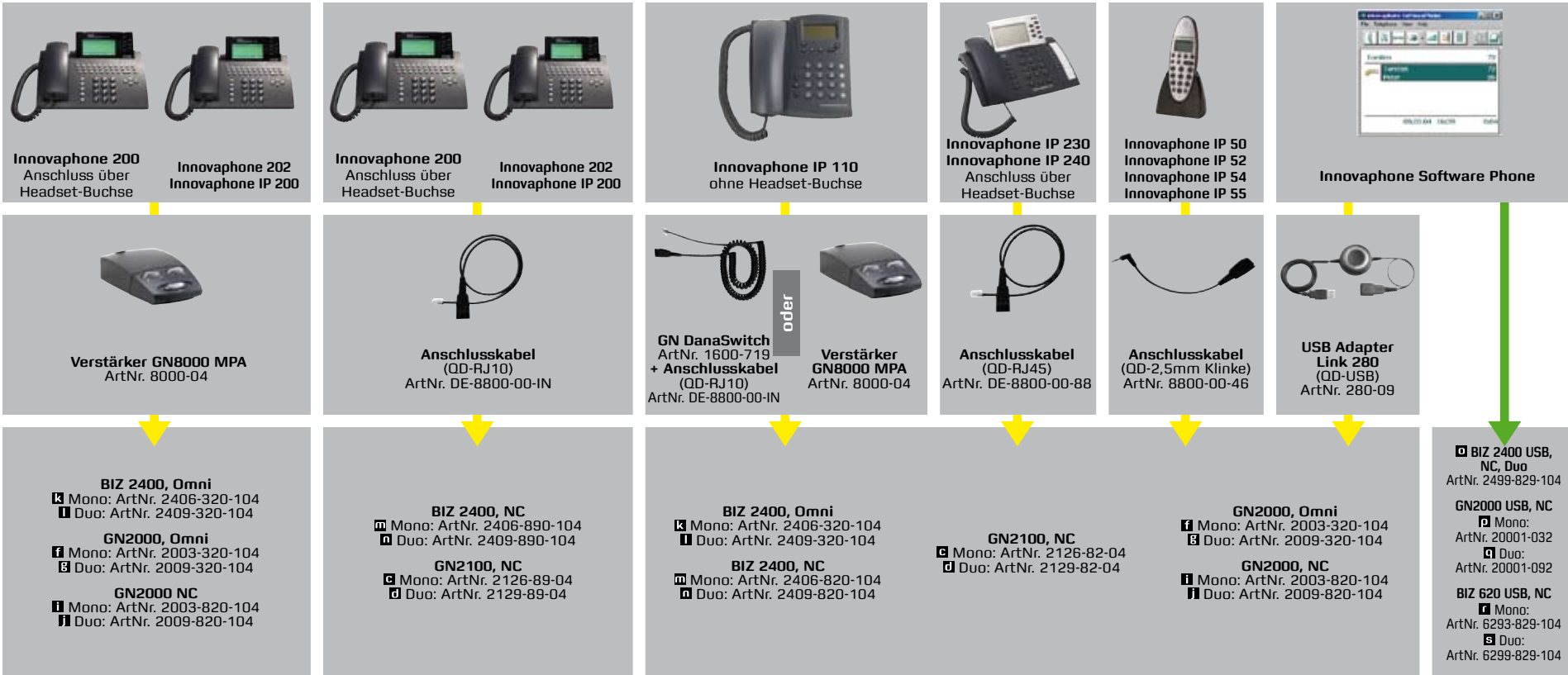
O P
GO 6400 Serie



A B C
GN9300 Serie



D E F G
GN9120 Serie



k l m n o
BIZ 2400 Serie



f g h i j p q
GN2000 Serie



c d
GN2100 Serie



r s
BIZ 620 Serie